



# Technical Data

## 13 Amp Converter Switched Socket Outlet

### Brief product description:

The subtle design will blend with any décor - suitable for domestic or commercial installations.

Easily convert a single socket to a double with no alteration to the wall box.

### Features:

- Stylish modern profile
- Covers to conceal fixing screws
- Colour coded terminals with backed out captive screws for easy installation
- 2 Earth terminals

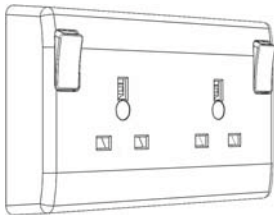


822CON

### Technical Specifications

|                         |  |
|-------------------------|--|
| Standard(s)             | BS 1363 Part 2   |
| Rating                  | 13 Amp 250V~   |
| Switch type             | Single pole  |
| Contact Gap             | 3.0mm minimum  |
| Terminal Capacity       | 3 x 2.5mm <sup>2</sup> 3 x 4mm <sup>2</sup> 2 x 6.0mm <sup>2</sup> |
| RoHS Directive          | No   |
| WEEE Directive          | No   |
| Mounting Box Depth(Min) | 25mm   |
| Fixing Centres          | 60.3mm   |
| Size                    | 146.5mm x 86mm x 28.6mm  |

### Line Diagrams



822CON

### Packaging Information

| Cat No. | Description  | Packaging Type  |             |             | Pack Quantity |           |           | Barcode       |           |           |
|---------|--------------|-----------------|-------------|-------------|---------------|-----------|-----------|---------------|-----------|-----------|
|         |              | Product         | Inner Box   | Outer Box   | Each          | Inner Box | Outer Box | Individual    | Inner Box | Outer Box |
| 822CON  | 13A 1G to 2G | Nexus Clamshell | Nexus Inner | Nexus Outer | 1             | 5         | 50        | 5050765008327 |           |           |

### Weights & Dimensions

| Cat No. | Description  | Dimension (W x L x H) cm |              |              | Weight (g) |           |           | CMB (m <sup>3</sup> ) |
|---------|--------------|--------------------------|--------------|--------------|------------|-----------|-----------|-----------------------|
|         |              | Product                  | Inner Box    | Outer Box    | Each       | Inner Box | Outer Box | Outer Box             |
| 822CON  | 13A 1G to 2G | /                        | Xx x Xx x XX | Xx x Xx x XX | xxx        | xxx       | xxxx      | xxxxxxxx              |

# 13 Amp Converter Switched Socket Outlet

## Installation Information

### Safety Warning

Before use please read carefully and use in accordance with these safety wiring instructions.

Before commencing any electrical work ensure the supply is **switched off at the mains**. Either by switching off the consumer unit or by removing the appropriate fuse.

Wiring should be in accordance with the latest edition of the IEE regulations (BS 7671).

### Wire Identification – Twin & Earth Cable

EARTH = Green/Yellow Slewing

NEUTRAL = Black (pre Apr 04) / Blue (after Apr 04)

LIVE = Red (pre Apr 04) / Brown (after Apr 04)



**Technical Helpline: 0845 194 7584**

**If in doubt consult a competent electrician.**

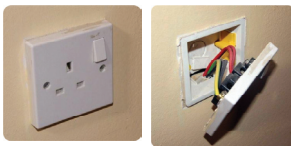
This converter socket has been designed to fit a single 25mm deep metal box, or 25mm plastic dry lining wall box conforming to BS4662.

For indoor use only. Power sockets should be wired using a minimum 2.5mm<sup>2</sup> core cable.

### Easily convert a single socket to a double with no alteration to the wall box

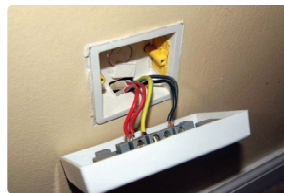
#### Step 1

Switch off electricity supply & remove the old socket



#### Step 2

Connect the new Converter Socket



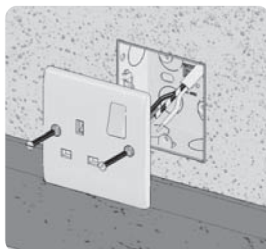
#### Step 3

Fix to wall box & fit screw cover caps



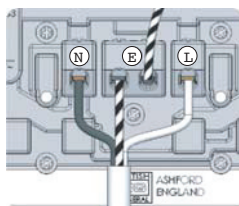
### Installation Instructions

1. Remove and disconnect your existing single socket. The simplest way is either to label each conductor with the location of the terminal to which it connects as you release it or to transfer one conductor at a time to the corresponding terminal on the new product.



2. Locate conductors into the correct terminal of the converter socket. Ensure that all bare conductors are housed in their respective terminals before tightening the terminal screws, ensuring no bare wires are visible. Always tighten the terminal screws tightly.

(Refer to the wiring diagrams for guidance)



### Note

An earth connection should always be made between the mounting box earth terminal, and the accessory earth terminal. If this earth wire is bare, it is essential that it sheathed with a length of green/yellow sleeving.

3. Remove the two fixing screws and screw caps provided from the rear of the socket.

4. Before refixing the new product, double check your connections.

5. Carefully position the accessory into the wall box, ensuring no that no wires are trapped between the plate and the wall, and fully secure using the fixing screws provided. Do not overtighten the screws. Firmly place the screw caps into the fixing screw locations to hide the screw heads.



6. Once you are sure that all work has been completed correctly, replace the fuse for the circuit, switch the power back on, and test. The product is now ready for use.

