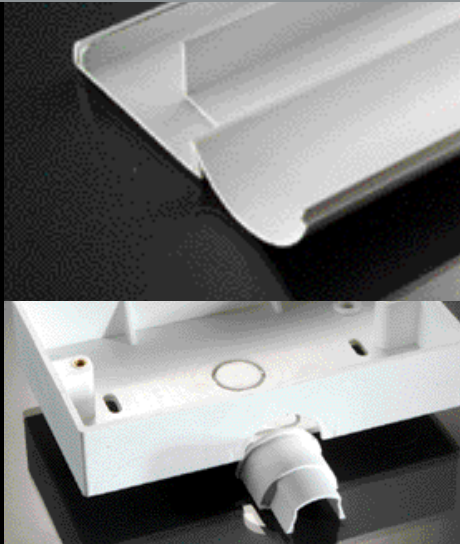


Electrical



5. When installing power and data cables in same D-Line, divider strip should be fixed to compartmentalise the profile. For 60 x 30 and 50 x 25 D-Line we advise the divider ledge is aligned as a right angle fixed against the internal ledge opposite the hinged clip-side. The divider strip needs to be fixed with at least 25mm clearance from the end of the D-Line to enable accessories to be comfortably accommodated.
6. When fixing bends and tees leave a space equal to the D-Line width to later retro-fit accessory piece(s) as shown below. When fixing couplers (or tees) leave a space equal to the fascia part of the coupler to later retro-fit the accessory. When using accessories simply lift D-Line lid at end of length and fit open-back accessory piece. Snap-close lids to secure.

7. To achieve the best connection when fitting switch and socket boxes we advise you push down the pre-punched knockout cover first. Then fix the D-Line 30 x 15 box adaptor (or tee adaptor) before the box is fixed to the surface.
8. For neatest finish enclose open ends with D-Line end cap.
9. To add (or remove) cables D-Line should be opened by applying downward and outward pressure on the lid near the clip opening.

