



# Data Sheet

Product Code: XDR45SS

**Product Description:** 45A Cooker Switch (Single Plate, Red Rocker)

**Range:** Screwless

**Finish:** Pewter

**Product Category:** Cooker Switch

**Insert/Knob Colour:** Red Insert

**Barcode:** 5021575193671

**Dimensions:** 86x86x35mm

**Faceplate Depth:** 4mm

**Net Weight:** 186g

**Gross Weight:** 188g

**Fixing Centres:** 60.3mm

**Depth from Mounting Face:** 24.9mm

**Recommended Back Box Depth:** 35mm

**Operating Voltage:** 230v 50Hz

**Maximum Load Rating:** Cooker Switch; 45A | Socket; 13A

**Maximum Current Rating:** 45A

**Terminal (Live) Diameter:** 6.4mm; **Capacity:** 2 x 10mm<sup>2</sup>

**Terminal (Neutral) Diameter:** 6.4mm; **Capacity:** 2 x 10mm<sup>2</sup>

**Terminal (Earth) Diameter:** 5.4mm; **Capacity:** 2 x 10mm<sup>2</sup>

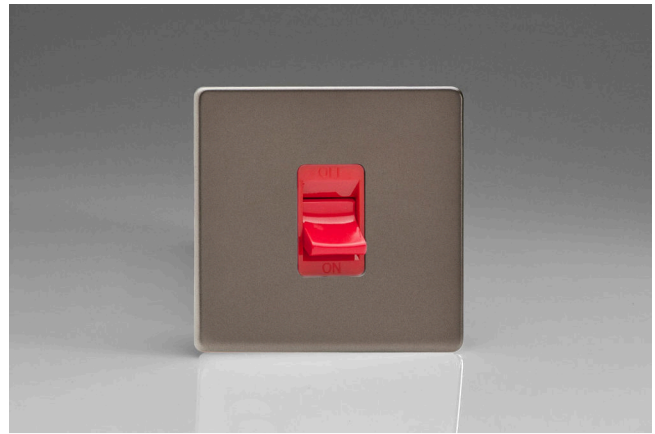
**Intended Applications:** Indoor Use Only. Domestic power supply.

**Safety Advice:** Product Must Be Earthed.

**Applicable Safety Standard:** BS EN 60669-1

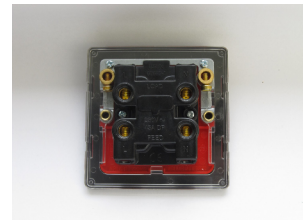
**Commodity Code:** 85389091

Declaration of Conformity



## Product Features

- ✔ Double pole switching
- ✔ Single sized plate
- ✔ Sleek, low-profile screwless faceplate



10 YEAR GUARANTEE

BRITISH MADE



*All information is subject to change without notice. Errors and omissions excepted. Images are for illustrative purposes only. Individual features and colours may vary. Refer to date of issue to identify latest version.*

*Date of Issue: 06th February 2022 © Doyle & Tratt Products Ltd, Carylls Lea, Faygate, West Sussex, RH12 4SJ, United Kingdom. All rights reserved.*